

SURVEYOR'S OFFICE

Hamilton County

Kenton C. Ward, CFM
Surveyor of Hamilton County
Phone (317) 776-8495
Fax (317) 776-9628

Suite 188
One Hamilton County Square
Noblesville, Indiana 46060-2230

August 29, 2016

To: Hamilton County Drainage Board

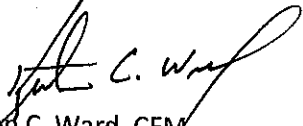
Re: Crooked Creek Drain –West Carmel Commons Shed Correction

Upon review of the drainage shed of the Park Northwestern and Crooked Creek Drains, it has been determined the development of West Carmel Commons commercial subdivision has changed the watershed boundaries. The development of West Carmel Commons included the installation of a detention pond and storm sewer outlet to an existing pipe in Mayflower Park, as an adequate outlet could not be found in Park Northwestern and the pipeline companies would not allow a pipe crossing of the easement. The changes are as follows:

Parcel	Owner	Remove from Park Northwestern	Add to Crooked Creek
17-13-07-00-00-011.001	Tommy Hall	0.80 acres	0.80 acres
17-13-07-00-00-009.000	Blackstone Clinton LLC	1.17 acres	1.17 acres
17-13-07-00-00-008.000	Blackstone Clinton LLC	1.64 acres	1.64 acres
17-13-07-00-00-005.000	Carl & Lee Terry	4.45 acres	4.45 acres
17-13-07-00-00-006.000	Carl & Lee Terry	1.71 acres	1.71 acres
17-13-07-00-01-011.001	Carl & Lee Terry	4.00 acres	4.00 acres
17-13-07-00-10-007.000	Resort Condominiums International, LLC	0.95 acres	0.95 acres
Michigan Road ROW	INDOT	6.26 acres	6.26 acres
Retail Parkway ROW	City of Carmel	2.49 acres	2.49 acres

This will result in \$386.90 being removed from the Park Northwestern assessment rolls and \$272.26 being added to the Crooked Creek assessment rolls.

I recommend that the Board set a hearing to consider this watershed boundary change for
October 24, 2016.

A handwritten signature in black ink, appearing to read "Kenton C. Ward". The signature is fluid and cursive, with the first name being the most prominent.

Kenton C. Ward, CFM
Hamilton County Surveyor

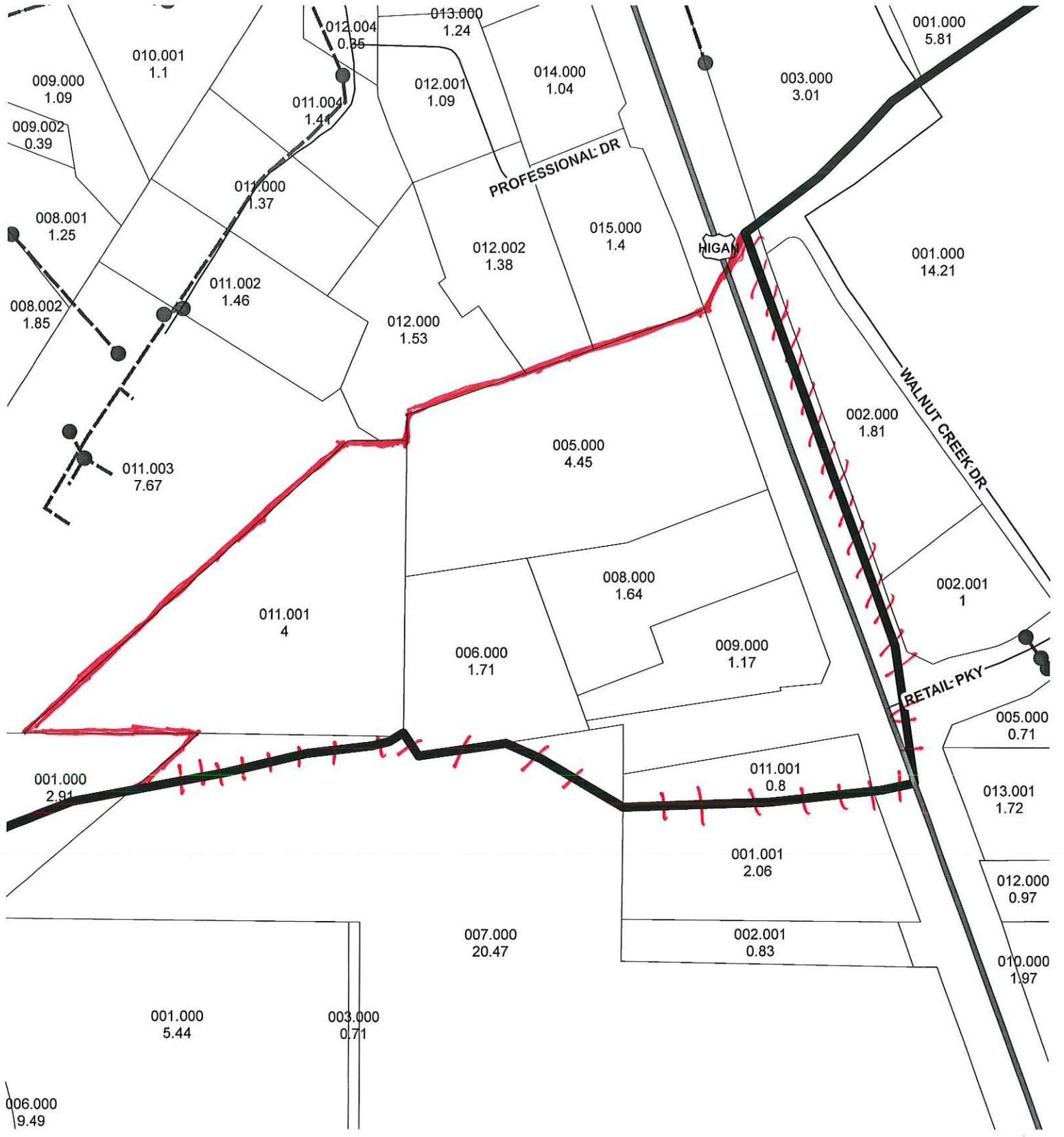
KCW/pll

Crooked Creek #250

West Carmel Commons Shed Correction
 Moving parcels from Park Northwestern to Crooked Creek.
 Hearing: 10-24-16

Maintenance
 Commercial 5.00
 Roads 10.00
 Rate
 Minimum 30.00

Parcel	Owner	Description	Park NW Benefit	Park NW Asmt	Crooked Crk Benefit	Crooked Crk Asmt	% of Total
17-13-07-00-00-011.001	Hall, Tommy R.	S7 T17 R3 0.80 AC	0.80	\$ 20.00	0.80	\$ 30.00	11.02%
17-13-07-00-00-009.000	Blackstone Clinton LLC	S7 T17 R3 West Carmel Commons Lot 2A, 1.17 Ac	1.17	\$ 23.40	1.17	\$ 30.00	11.02%
17-13-07-00-00-008.000	Blackstone Clinton LLC	S7 T17 R3 West Carmel Commons Lot 1A, 1.64 Ac	1.64	\$ 32.80	1.64	\$ 30.00	11.02%
17-13-07-00-00-005.000	Terry, Carl B & O Lee	S7 T17 R3 4.45 AC	4.45	\$ 89.00	4.45	\$ 30.00	11.02%
17-13-07-00-00-006.000	Terry, Carl B & O Lee	S7 T17 R3 West Carmel Commons Lot 3, 1.71 Ac	1.71	\$ 34.20	1.71	\$ 30.00	11.02%
17-13-07-00-01-011.001	Terry, Carl B & O Lee	S7 T17 R3 Park Northwestern Lot Pt 11, 4.00 Ac	4.00	\$ 80.00	4.00	\$ 30.00	11.02%
17-13-07-00-10-007.000	Resort Condominiums International	S7 T17 R3 Mayflower Park Blk 5, 20.47 Ac*	0.95	\$ 20.00	0.95	\$ 4.76	1.75%
99-99-99-99-99-999.002	*Will add 0.95 Ac to existing 19.52 Ac to existing 20.47 Ac Ben at \$102.36 to Crooked Crk. Indiana Dept. of Trans.	S7 T17 R3 Michigan Rd, 6.26 Ac*	6.26	\$ 62.60	6.26	\$ 62.60	22.99%
99-99-99-99-99-999.005	*Will add 6.26 acres to existing acreage assessed to Crooked Creek. City of Carmel	S7 T17 R3 Retail Parkway, 2.49 Ac*	2.49	\$ 24.90	2.49	\$ 24.90	9.15%
*Will add 2.49 acres to existing acreage assessed to Crooked Creek.							
Parcels: 9			Totals:		23.47	\$ 386.90	100.0%





Move to Crooked Creek Shed

