



Kenton C. Ward, CFM
Surveyor of Hamilton County
Phone (317) 776-8495
Fax (317) 776-9628

Suite 188
One Hamilton County Square
Noblesville, Indiana 46060-2230

August 6, 2019

To: Hamilton County Drainage Board

Re: Hinkle Creek Drain, 236th Street Extension

Attached is a drain map, drainage shed map and schedule of assessments for the extension of the Hinkle Creek Drain. This proposed drain is located in Jackson Township.

I have made a personal inspection of the land described below. Upon doing so, I believe that the drain is practicable, will improve the public health, benefit a public highway and be of public utility and that the costs, damages and expenses of the proposed drain will probably be less than the benefits accruing to the owners of land likely to be benefited. The drain will consist of the following:

Open Ditch 31 ft.

The total length of the drain will be 31 feet.

The extension will begin at the existing north right of way line of 236th Street and extend across to the south right of way line of 236th Street.

The rates for the Hinkle Creek Drain have been set at \$25.00 per acre for roads. The annual maintenance collection for this extension will be \$60.00.

The nature of maintenance work required is as follows:


1. Bank erosion protection and/or seeding as might be required;
2. Removal of debris and/or blockages from existing open drain;
3. Removal of beaver dams;
4. Any other repairs necessary to restore proper flow to the open ditch.

The frequency with which maintenance work should be performed is annually as required by the condition of the drain.

The easements for the drain should be set at 75' from top of bank as set out in IC 36-9-27-33.

I recommend that the Board set a hearing for this proposal for September 23, 2019.

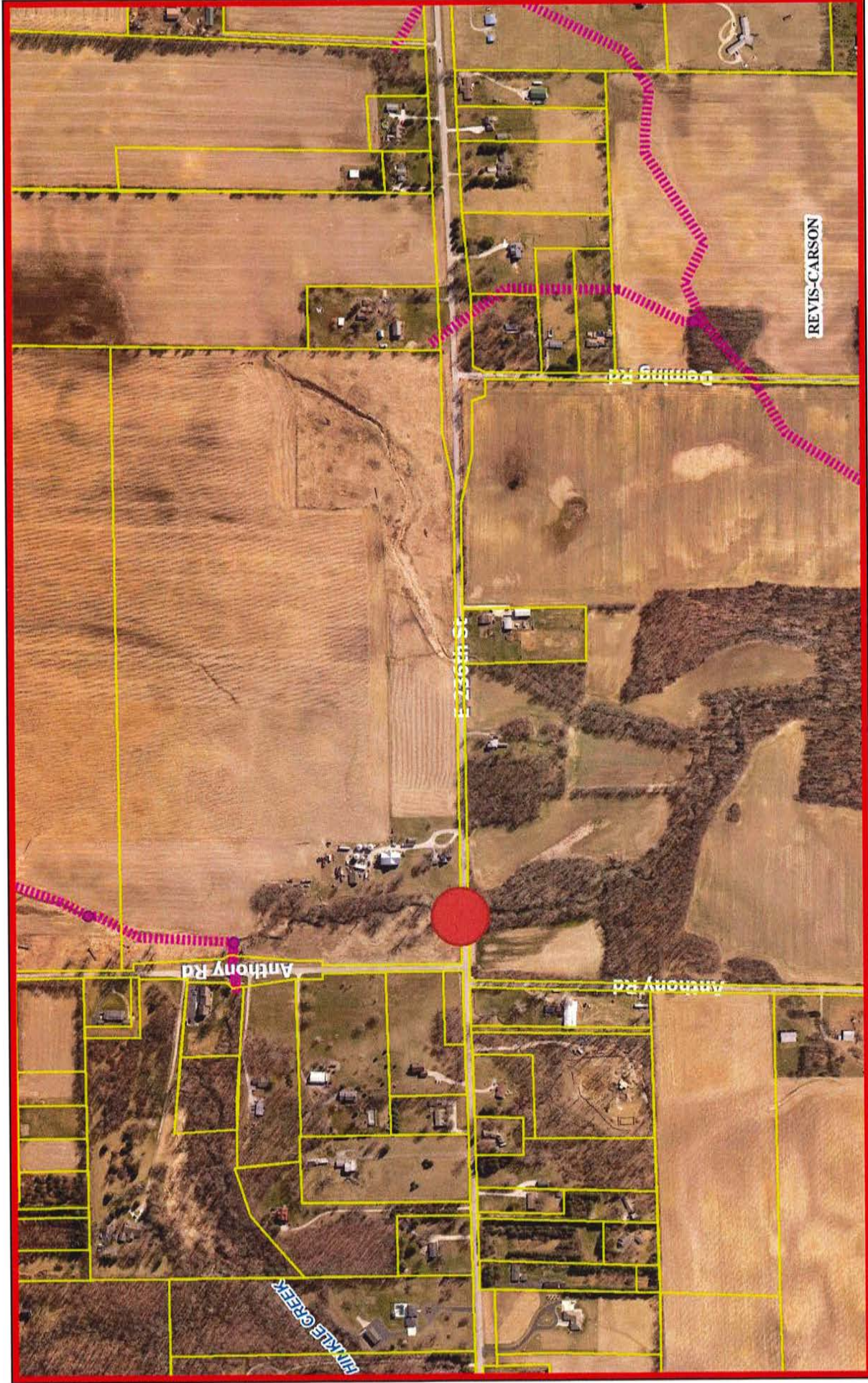
Sincerely,



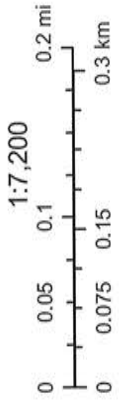
Kenton C. Ward, CFM
Hamilton County Surveyor

KCW/pll

Hinkle Creek Drain, 236th Street Extension



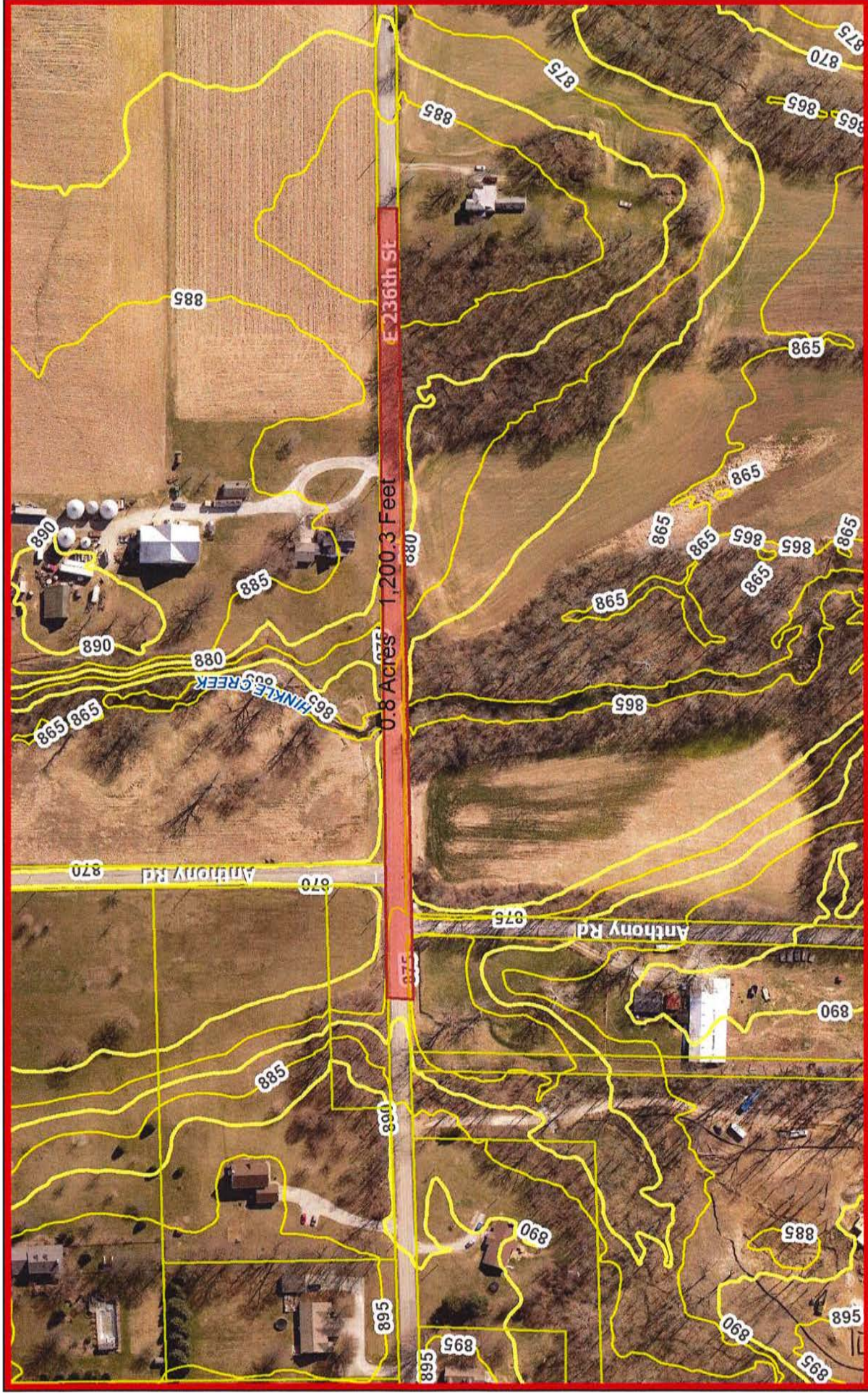
August 6, 2019



- Parcels
- Subdivisions
- Interstates & US Highways
- State Highways
- Major Roads
- Minor Roads
- Lakes & Reservoirs
- Rivers & Streams
- Corporate Limits (Outline)

Hamilton County compiled this map. Although strict accuracy standards have been employed, Hamilton County does not warrant or guarantee the accuracy of the information contained herein and disclaims any and all liability resulting from any error or omission.
 Author: Hamilton County

Hinkle Creek Drain, 236th Street Extension



August 6, 2019

- Parcels
- Subdivisions
- Interstates & US Highways
- State Highways
- Major Roads
- Minor Roads
- Lakes & Reservoirs
- Rivers & Streams
- Corporate Limits (Outline)



Hinkle Creek Drain, 236th Street Extension



August 6, 2019

- Parcels
- Subdivisions
- Interstates & US Highways

- State Highways
- Major Roads
- Minor Roads

- Lakes & Reservoirs
- Rivers & Streams
- Corporate Limits (Outline)

