

SURVEYOR'S OFFICE
Hamilton County

Kenton C. Ward, CFM
Surveyor of Hamilton County
Phone (317) 776-8495
Fax (317) 776-9628

Suite 188
One Hamilton County Square
Noblesville, Indiana 46060-2230

December 6, 2019

To: Hamilton County Drainage Board

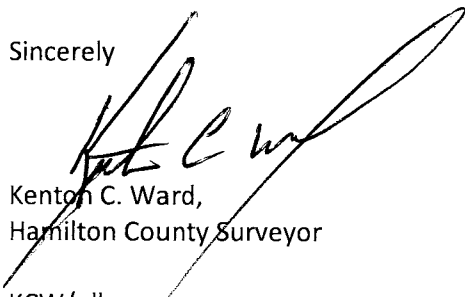
Re: Thor Run Drainage Shed Correction, Reserve at Steeplechase Section 4

Due to the development of the Reserve at Steeplechase Section 4 a revision to the drainage shed is needed. Prior to the development the property drained south into the Springs of Cambridge/Bee Camp Creek Drain. Due to development the property of the drainage has been re-directed to drain north and outlet into the Thor Run Drainage Shed.

The drainage shed needs corrected to change the assessment from the current Springs of Cambridge/Bee Camp Creek Drainage Shed to the Thor Run Drainage Shed. The lots in this subdivision will be assessed at the Un-Regulated Subdivision rate of \$5.00 per acre with a \$35.00 minimum. The road acreage will be assessed at \$10.00 per acre. The total to be collected for this subdivision is \$1,780.70. The first assessment for these lots will be due in the Spring of 2020.

I recommend a hearing be set for January 27, 2020.

Sincerely



Kenton C. Ward,
Hamilton County Surveyor

KCW/pll

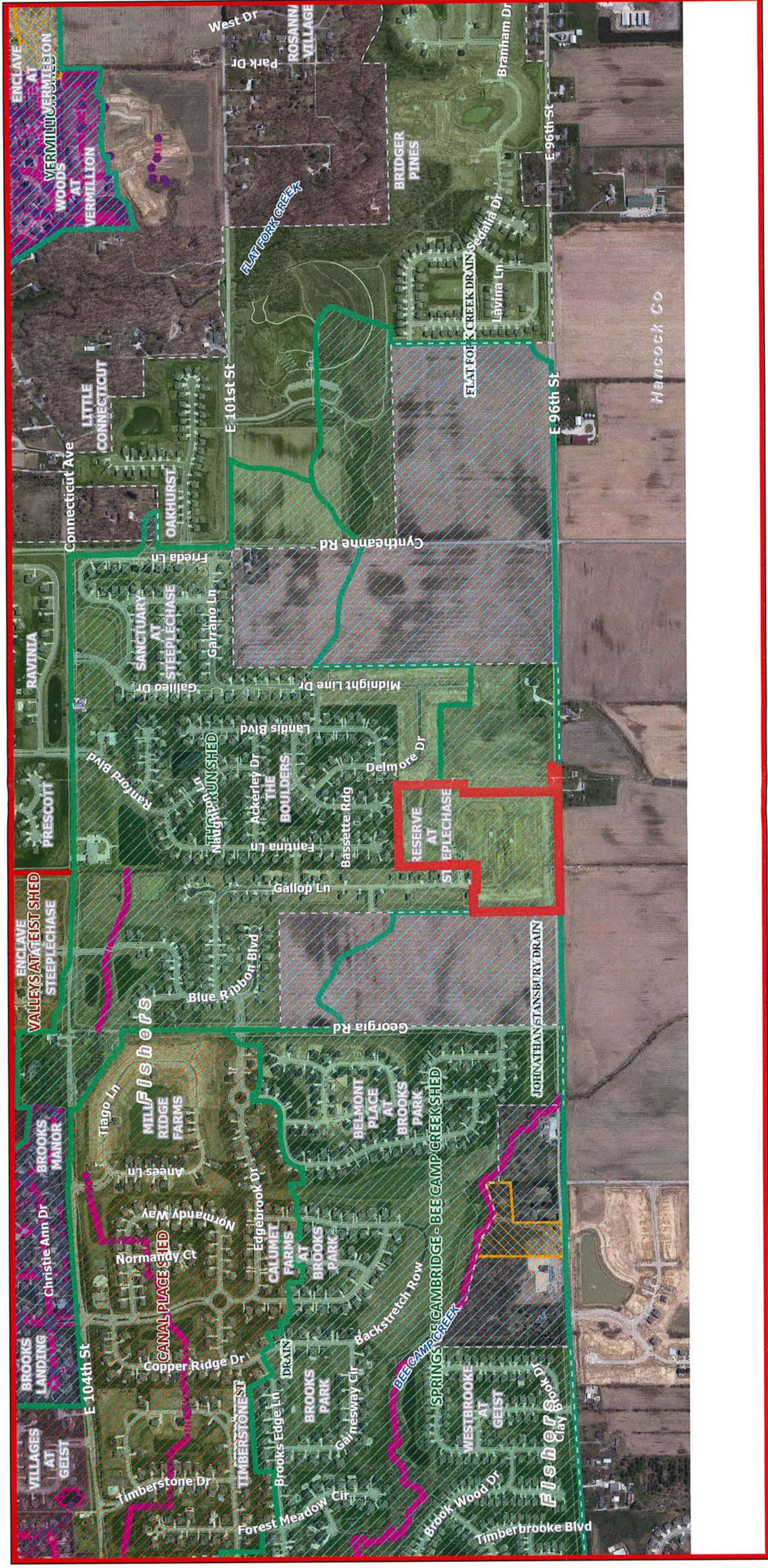
Thor Run #309

Thor Run and Springs of Cambridge/Bee Camp Crk Shed Corrections

Shed corrections due to Reserve at Steeplechase development changes.
 Removing benefit from Springs of Cambridge/Bee Camp Creek #262 & adding to Thor Run #309.
 Hearing: 01/27/19

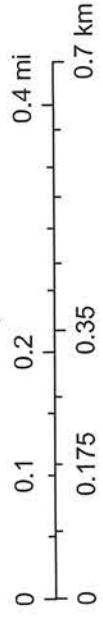
Parcel	Owner	Desc	Un-Regulated Subd	Subd	Ac	Rate	Minimum	Thor Run	% of Total	#309 Ben	#309 Asmt	#262 Ben	#262 Asmt	Spring of Cambridge
13-16-07-00-00-006.002	M I Homes of Indiana LP	S7 T17 R6 Reserve at Steeplechase Sec. 4 Lot 122	One Lot					\$ 5.00	1.97%	One Lot	\$35.00	<One Lot>	-\$35.00	\$ 5.00
13-16-07-00-24-001.000	M I Homes of Indiana LP	S7 T17 R6 Reserve at Steeplechase Sec. 4 Lot 123	One Lot					\$ 5.00	1.97%	One Lot	\$35.00	<One Lot>	-\$35.00	\$ 35.00
13-16-07-00-24-002.000	M I Homes of Indiana LP	S7 T17 R6 Reserve at Steeplechase Sec. 4 Lot 124	One Lot					\$ 5.00	1.97%	One Lot	\$35.00	<One Lot>	-\$35.00	\$ 10.00
13-16-07-00-24-003.000	M I Homes of Indiana LP	S7 T17 R6 Reserve at Steeplechase Sec. 4 Lot 125	One Lot					\$ 5.00	1.97%	One Lot	\$35.00	<One Lot>	-\$35.00	
13-16-07-00-24-004.000	M I Homes of Indiana LP	S7 T17 R6 Reserve at Steeplechase Sec. 4 Lot 126	One Lot					\$ 5.00	1.97%	One Lot	\$35.00	<One Lot>	-\$35.00	
13-16-07-00-24-005.000	M I Homes of Indiana LP	S7 T17 R6 Reserve at Steeplechase Sec. 4 Lot 127	One Lot					\$ 5.00	1.97%	One Lot	\$35.00	<One Lot>	-\$35.00	
13-16-07-00-24-006.000	M I Homes of Indiana LP	S7 T17 R6 Reserve at Steeplechase Sec. 4 Lot 128	One Lot					\$ 5.00	1.97%	One Lot	\$35.00	<One Lot>	-\$35.00	
13-16-07-00-24-007.000	M I Homes of Indiana LP	S7 T17 R6 Reserve at Steeplechase Sec. 4 Lot 160	One Lot					\$ 5.00	1.97%	One Lot	\$35.00	<One Lot>	-\$35.00	
13-16-07-00-24-008.000	M I Homes of Indiana LP	S7 T17 R6 Reserve at Steeplechase Sec. 4 Lot 161	One Lot					\$ 5.00	1.97%	One Lot	\$35.00	<One Lot>	-\$35.00	
13-16-07-00-24-009.000	M I Homes of Indiana LP	S7 T17 R6 Reserve at Steeplechase Sec. 4 Lot 162	One Lot					\$ 5.00	1.97%	One Lot	\$35.00	<One Lot>	-\$35.00	
13-16-07-00-24-010.000	M I Homes of Indiana LP	S7 T17 R6 Reserve at Steeplechase Sec. 4 Lot 163	One Lot					\$ 5.00	1.97%	One Lot	\$35.00	<One Lot>	-\$35.00	
13-16-07-00-24-011.000	M I Homes of Indiana LP	S7 T17 R6 Reserve at Steeplechase Sec. 4 Lot 164	One Lot					\$ 5.00	1.97%	One Lot	\$35.00	<One Lot>	-\$35.00	
13-16-07-00-24-012.000	M I Homes of Indiana LP	S7 T17 R6 Reserve at Steeplechase Sec. 4 Lot 165	One Lot					\$ 5.00	1.97%	One Lot	\$35.00	<One Lot>	-\$35.00	
13-16-07-00-24-013.000	M I Homes of Indiana LP	S7 T17 R6 Reserve at Steeplechase Sec. 4 Lot 166	One Lot					\$ 5.00	1.97%	One Lot	\$35.00	<One Lot>	-\$35.00	
13-16-07-00-24-014.000	M I Homes of Indiana LP	S7 T17 R6 Reserve at Steeplechase Sec. 4 Lot 167	One Lot					\$ 5.00	1.97%	One Lot	\$35.00	<One Lot>	-\$35.00	
13-16-07-00-24-015.000	M I Homes of Indiana LP	S7 T17 R6 Reserve at Steeplechase Sec. 4 Lot 168	One Lot					\$ 5.00	1.97%	One Lot	\$35.00	<One Lot>	-\$35.00	
13-16-07-00-24-016.000	M I Homes of Indiana LP	S7 T17 R6 Reserve at Steeplechase Sec. 4 Lot 169	One Lot					\$ 5.00	1.97%	One Lot	\$35.00	<One Lot>	-\$35.00	
13-16-07-00-24-017.000	M I Homes of Indiana LP	S7 T17 R6 Reserve at Steeplechase Sec. 4 Lot 170	One Lot					\$ 5.00	1.97%	One Lot	\$35.00	<One Lot>	-\$35.00	
13-16-07-00-24-018.000	M I Homes of Indiana LP	S7 T17 R6 Reserve at Steeplechase Sec. 4 Lot 171	One Lot					\$ 5.00	1.97%	One Lot	\$35.00	<One Lot>	-\$35.00	
13-16-07-00-24-019.000	M I Homes of Indiana LP	S7 T17 R6 Reserve at Steeplechase Sec. 4 Lot 172	One Lot					\$ 5.00	1.97%	One Lot	\$35.00	<One Lot>	-\$35.00	
13-16-07-00-24-020.000	M I Homes of Indiana LP	S7 T17 R6 Reserve at Steeplechase Sec. 4 Lot 173	One Lot					\$ 5.00	1.97%	One Lot	\$35.00	<One Lot>	-\$35.00	
13-16-07-00-24-021.000	M I Homes of Indiana LP	S7 T17 R6 Reserve at Steeplechase Sec. 4 Lot 174	One Lot					\$ 5.00	1.97%	One Lot	\$35.00	<One Lot>	-\$35.00	
13-16-07-00-24-022.000	M I Homes of Indiana LP	S7 T17 R6 Reserve at Steeplechase Sec. 4 Lot 175	One Lot					\$ 5.00	1.97%	One Lot	\$35.00	<One Lot>	-\$35.00	
13-16-07-00-24-023.000	M I Homes of Indiana LP	S7 T17 R6 Reserve at Steeplechase Sec. 4 Lot 176	One Lot					\$ 5.00	1.97%	One Lot	\$35.00	<One Lot>	-\$35.00	
13-16-07-00-24-024.000	M I Homes of Indiana LP	S7 T17 R6 Reserve at Steeplechase Sec. 4 Lot 177	One Lot					\$ 5.00	1.97%	One Lot	\$35.00	<One Lot>	-\$35.00	
13-16-07-00-24-025.000	M I Homes of Indiana LP	S7 T17 R6 Reserve at Steeplechase Sec. 4 Lot 178	One Lot					\$ 5.00	1.97%	One Lot	\$35.00	<One Lot>	-\$35.00	
13-16-07-00-24-026.000	M I Homes of Indiana LP	S7 T17 R6 Reserve at Steeplechase Sec. 4 Lot 179	One Lot					\$ 5.00	1.97%	One Lot	\$35.00	<One Lot>	-\$35.00	
13-16-07-00-24-027.000	M I Homes of Indiana LP	S7 T17 R6 Reserve at Steeplechase Sec. 4 Lot 180	One Lot					\$ 5.00	1.97%	One Lot	\$35.00	<One Lot>	-\$35.00	
13-16-07-00-24-028.000	M I Homes of Indiana LP	S7 T17 R6 Reserve at Steeplechase Sec. 4 Lot 181	One Lot					\$ 5.00	1.97%	One Lot	\$35.00	<One Lot>	-\$35.00	
13-16-07-00-24-029.000	M I Homes of Indiana LP	S7 T17 R6 Reserve at Steeplechase Sec. 4 Lot 182	One Lot					\$ 5.00	1.97%	One Lot	\$35.00	<One Lot>	-\$35.00	
13-16-07-00-24-030.000	M I Homes of Indiana LP	S7 T17 R6 Reserve at Steeplechase Sec. 4 Lot 183	One Lot					\$ 5.00	1.97%	One Lot	\$35.00	<One Lot>	-\$35.00	
13-16-07-00-24-031.000	M I Homes of Indiana LP	S7 T17 R6 Reserve at Steeplechase Sec. 4 Lot 184	One Lot					\$ 5.00	1.97%	One Lot	\$35.00	<One Lot>	-\$35.00	
13-16-07-00-24-032.000	M I Homes of Indiana LP	S7 T17 R6 Reserve at Steeplechase Sec. 4 CA 10, 2.28 Ac	2.28					\$ 5.00	1.97%	2.28	\$35.00	-2.28	-\$35.00	
13-16-07-00-24-033.000	M I Homes of Indiana LP	S7 T17 R6 Reserve at Steeplechase Sec. 4 CA 11A, 0.11 Ac	0.11					\$ 5.00	1.97%	0.11	\$35.00	-0.11	-\$35.00	
13-16-07-00-24-034.000	M I Homes of Indiana LP	S7 T17 R6 Reserve at Steeplechase Sec. 4 CA 12, 0.34 Ac	0.34					\$ 5.00	1.97%	0.34	\$35.00	-0.34	-\$35.00	
13-16-07-00-24-035.000	M I Homes of Indiana LP	S7 T17 R6 Reserve at Steeplechase Sec. 4 CA 13, 0.40 Ac	0.40					\$ 5.00	1.97%	0.40	\$35.00	-0.40	-\$35.00	
13-16-07-00-24-036.000	M I Homes of Indiana LP	S7 T17 R6 Reserve at Steeplechase Sec. 4 CA 14, 0.34 Ac	0.34					\$ 5.00	1.97%	0.34	\$35.00	-0.34	-\$35.00	
13-16-07-00-24-037.000	M I Homes of Indiana LP	S7 T17 R6 Reserve at Steeplechase Sec. 4 CA 15, 0.40 Ac	0.40					\$ 5.00	1.97%	0.40	\$35.00	-0.40	-\$35.00	
13-16-07-00-24-038.000	M I Homes of Indiana LP	S7 T17 R6 Reserve at Steeplechase Sec. 4 Pt CA 16, 5.60Ac	5.60					\$ 5.00	1.97%	5.60	\$35.00	-5.60	-\$35.00	
13-16-07-00-24-038.001	M I Homes of Indiana LP	S7 T17 R6 Reserve at Steeplechase Sec. 4 Pt CA 16, 1.83 Ac	1.83					\$ 5.00	1.97%	1.83	\$35.00	-1.83	-\$35.00	
13-16-07-00-24-039.000	M I Homes of Indiana LP	S7 T17 R6 Reserve at Steeplechase Sec. 4 Pt CA 17, 0.01 Ac	0.01					\$ 5.00	1.97%	0.01	\$35.00	-0.01	-\$35.00	
13-16-07-00-24-039.001	M I Homes of Indiana LP	S7 T17 R6 Reserve at Steeplechase Sec. 4 Pt CA 17, 0.01 Ac	0.01					\$ 5.00	1.97%	0.01	\$35.00	-0.01	-\$35.00	
13-16-07-00-24-040.000	M I Homes of Indiana LP	S7 T17 R6 Reserve at Steeplechase Sec. 4 Pt CA 18, 0.04 Ac	0.04					\$ 5.00	1.97%	0.04	\$35.00	-0.04	-\$35.00	
13-16-07-00-24-040.001	M I Homes of Indiana LP	S7 T17 R6 Reserve at Steeplechase Sec. 4 Pt CA 18, 0.03 Ac	0.03					\$ 5.00	1.97%	0.03	\$35.00	-0.03	-\$35.00	
13-16-07-00-24-041.000	M I Homes of Indiana LP	S7 T17 R6 Reserve at Steeplechase Sec. 4 Pt CA 19, 0.04 Ac	0.04					\$ 5.00	1.97%	0.04	\$35.00	-0.04	-\$35.00	
13-16-07-00-24-041.001	M I Homes of Indiana LP	S7 T17 R6 Reserve at Steeplechase Sec. 4 Pt CA 19, 0.03 Ac	0.03					\$ 5.00	1.97%	0.03	\$35.00	-0.03	-\$35.00	
99-99-99-99-99-999.007	City of Fishers	S7 T17 R6 Reserve at Steeplechase Sec. 4 Pt CA 19, 0.03 Ac	17.07					\$ 170.70	9.59%	17.07	\$170.70	-17.07	-\$170.70	
Parcels: 47			28.53					\$1,780.70	100.00%	28.53	\$1,780.70	-28.53	-\$1,780.70	
			Totals: 32 lots &											

Thor Run Drainage Shed Correction, Reserve at Steeplechase, Section 4



December 12, 2019

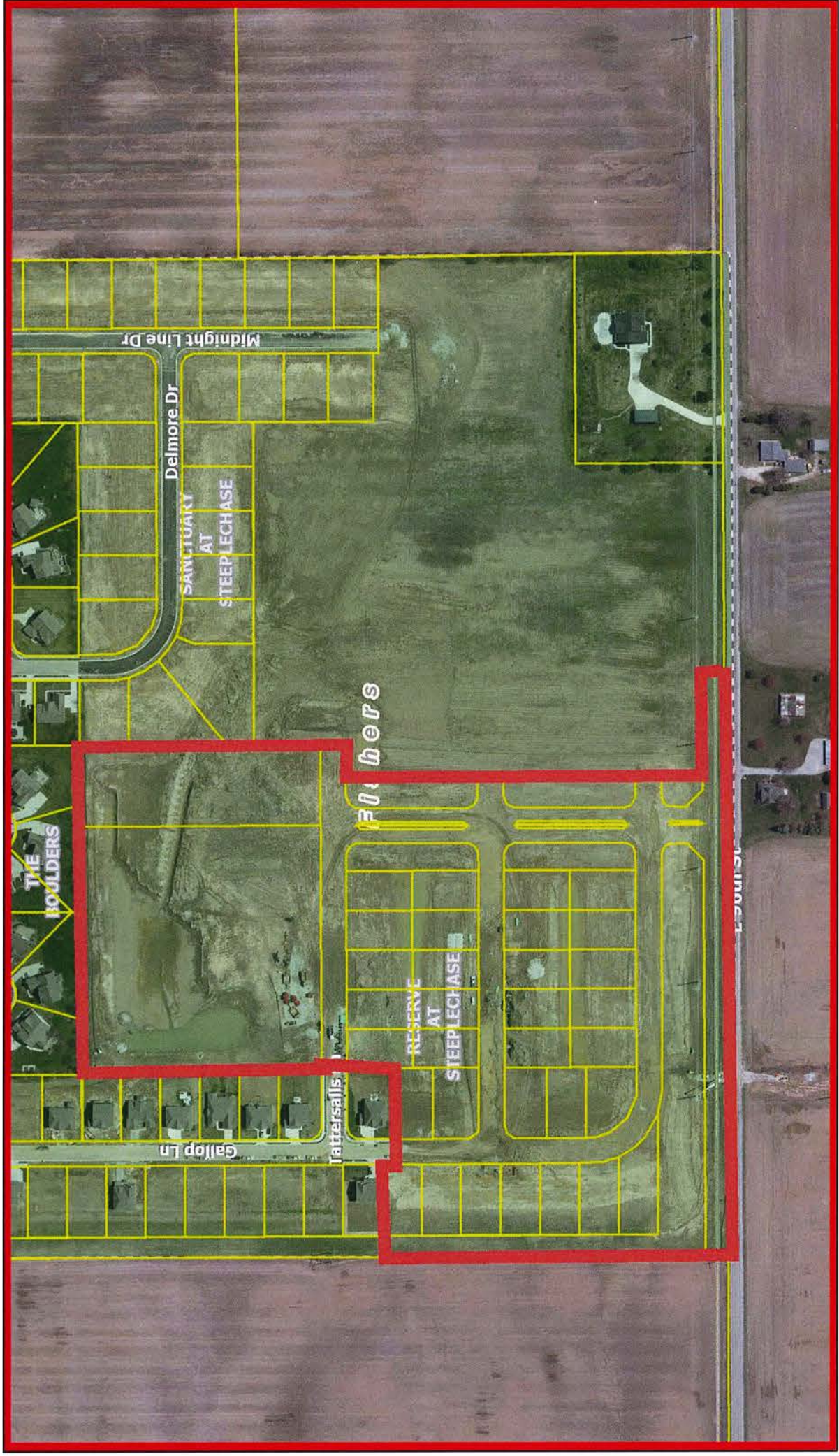
1:9,600



- Subdivisions
- Interstates & US Highways
- State Highways
- Major Roads
- Minor Roads
- Lakes & Reservoirs
- Rivers & Streams
- Corporate Limits (Label)
- Corporate Limits (Outline)
- Corporate Limits (Fill)
- ARCADIA
- ATLANTA
- CARMEL
- CICERO
- FISHERS
- NOBLESVILLE
- SHERIDAN
- WESTFIELD
- Sheds
- Subdivision Sheds
- Drainage Structures
- All Other Structures
- MUNICIPAL MANHOLE
- Drain Name
- Regulated Drains
- CLOSED DRAIN
- MUNICIPAL DRAIN
- OPEN DRAIN
- SSD
- Regulated Drains Waterways
- Regulated Drains Drainage Pool
- Subdivision Drainage Structures
- Subdivision Regulated Drains
- CLOSED DRAIN
- MUNICIPAL DRAIN
- OPEN DRAIN
- SSD
- Subdivision Drain Waterway
- Subdivision Drain Drainage Pool
- Regulated Subdivision Boundary
- Drains Under Construction

Hamilton County compiled this map. Although strict accuracy standards have been employed, Hamilton County does not warrant or guarantee the accuracy of the information contained herein and disclaims any and all liability resulting from any error or omission.
 Author: Hamilton County

Thor Run Drainage Shed Correction, Reserve at Steeplechase, Section 4



December 12, 2019

- Parcels
- Subdivisions
- Interstates & US Highways
- State Highways
- Major Roads
- Minor Roads
- Lakes & Reservoirs
- Rivers & Streams
- Corporate Limits (Label)



Hamilton County compiled this map. Although strict accuracy standards have been employed, Hamilton County does not warrant or guarantee the accuracy of the information contained herein and disclaims any and all liability resulting from any error or omission.
 Author: Hamilton County