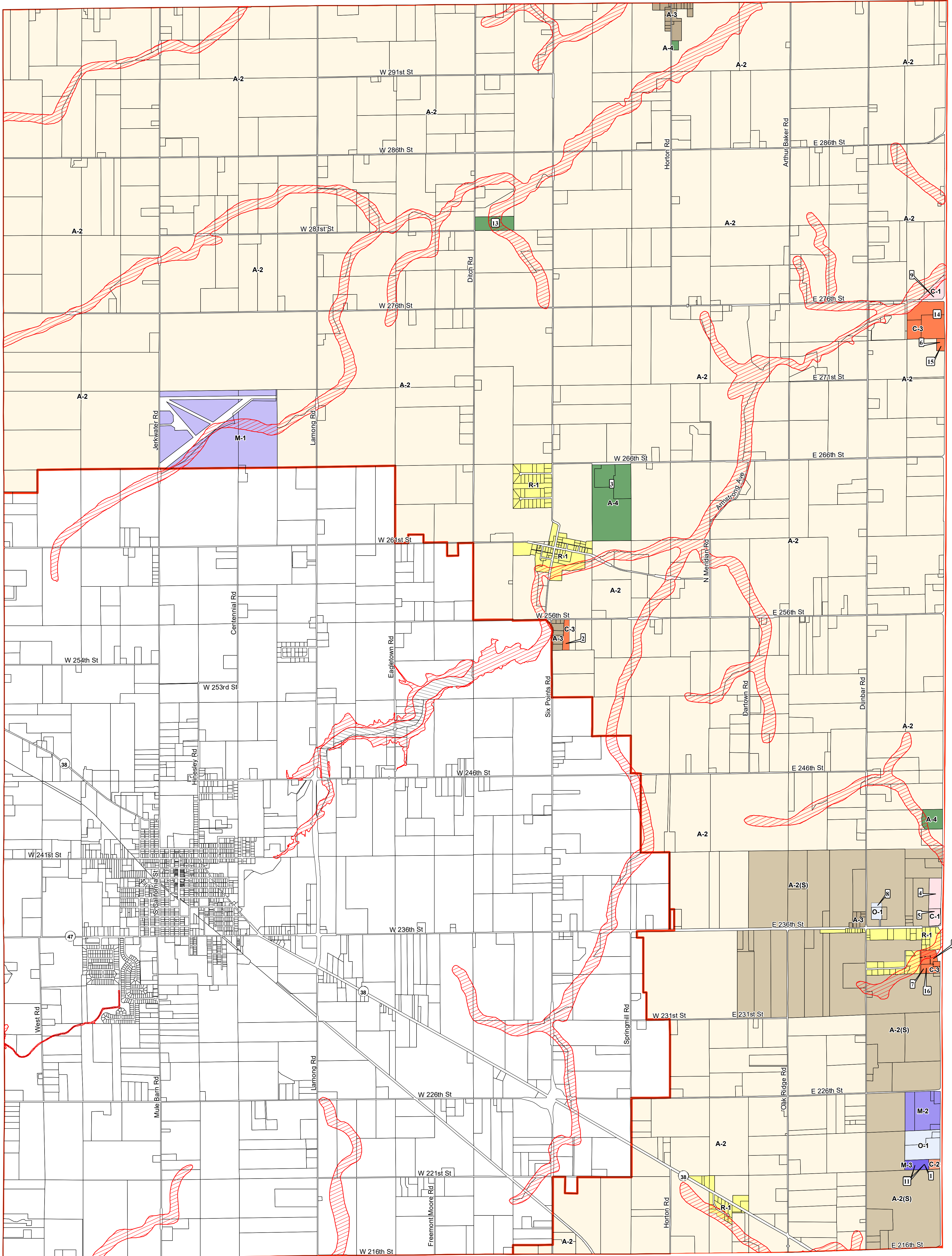


# Adams Township Zoning Map

(Hamilton County Plan Commission Jurisdictional Area)



## Legend

### Zoning Classifications

- A-2 Agricultural District
- A-2(S) Agricultural Subdivision District
- A-3 Agricultural Residential Country District
- A-4 Agricultural Business District

- C-1 Commercial Development - Residential Character - Minimal Community Impact
- C-2 Commercial Development - Moderate Community Impact
- C-3 Commercial Development - Major Community Impact
- M-1 Manufacturing Development - Moderate Community Impact
- M-2 Manufacturing Development - Major Community Impact

- M-3 Manufacturing Development - Mineral Extraction & Processing
- O-1 Office Development - Residential Character
- R-1 Residential - Low Density Suburban District
- R-3 Residential - Medium High Density Village District

### Flood Classifications

- 100 Year Floodplain
- Floodway

### Jurisdictional Boundaries

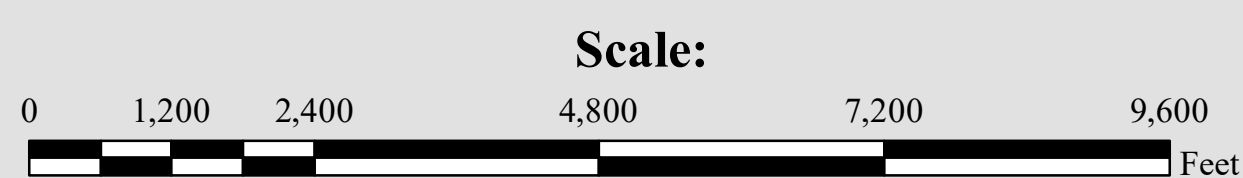
- Sheridan Jurisdictional Boundary

### Revisions:

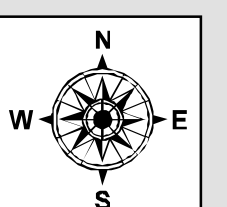
- |   |   |  |   |
|---|---|--|---|
| 1) O-1 TO M-2 PC-Z-0007-07-92 (3.0 ACRES 7-7-92) ORD NO. 8-17-92-1  | 5) A-2P TO C-1 PC-Z-0009-09-96 (11.0 ACRES 9-3-96) ORD NO. 9-9-96-A | 9) A-2 TO C-1 PC-Z-0006-08-2004 (9.24 ACRES) ORD NO. 8-23-04-A   | 13) A-2 TO A-4 PC-Z-0001-12-2011 (14.16 ACRES) ORD NO. 1-19-12-C        |
| 2) A-2 TO C-3 PC-Z-0008-08-94 (5.0 ACRES 9-6-94) ORD NO. 9-12-94-1  | 6) A-4P TO C-2 PC-Z-0002-01-01 (3.0 ACRES) ORD NO. 1-22-01-A        | 10) DROPPED THE "P" CLASSIFICATION FROM ALL RELATED ZONING CLASSIFICATIONS PER "PC-ORD-AMEND-0001-03-2004"       | 14) A-2 TO C-3 PC-Z-0001-09-2012 (35 ACRES) ORD NO. 1-14-13-B           |
| 3) A-2 TO A-4 PC-Z-0001-03-95 (88.0 ACRES) ORD NO. 3-13-95-A        | 7) R-1 TO C-2 PC-Z-0009-07-2002 (2.15 ACRES) ORD NO. 7-22-02-B      | 11) O-1 AND M-2 TO M-3 PC-Z-0004-12-2005 (6.19 ACRES) ORD NO. 02-27-06-A   | 15) C-2 TO C-3 PC-Z-0003-12-2012 (2.37 ACRES) ORD NO. 1-14-13-A         |
| 4) A-2P TO C-1P PC-Z-0009-09-96 (4.0 ACRES 9-3-96) ORD NO. 9-9-96-A | 8) A-2P TO O-1 PC-Z-0003-05-2004 (5.00 ACRES) ORD NO. 05-24-04-B    | 12) REVISED THE JURISDICTIONAL BOUNDARY WITH SHERIDAN PER "PC-ORD & MAP AMEND-0004-07-2006" ORD NO. 08-28-2006-1 | 16) C-2 & R-1 TO C-3 PC-Z-0003-11-2015 (13.45 ACRES) ORD NO. 10-28-19-A |



Map prepared by:  
Hamilton County Plan Commission G.I.S.  
Hamilton County Government & Judicial Center  
One Hamilton County Square Suite: 306  
Noblesville, Indiana 46060



The information shown on this map has been acquired from various departments within Hamilton County, and is believed to be the most accurate data at the time of plotting. It is continually updated as new and more accurate information is received, but is not warranted by the County as being without error.



Last Revision: April 08, 2020brs