

K. Ward

SURVEYOR'S OFFICE

Hamilton County

Kenton C. Ward, CFM
Surveyor of Hamilton County
Phone (317) 776-8495
Fax (317) 776-9628

Suite 188
One Hamilton County Square
Noblesville, Indiana 46060-2230

December 2, 2021

To: Hamilton County Drainage Board

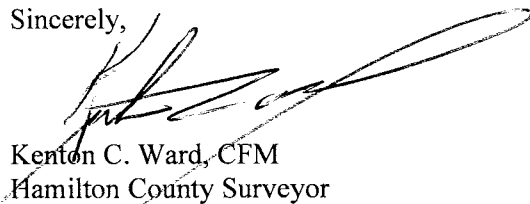
Re: Hinkle Creek Drain

I have reviewed the future needs of the Hinkle Creek Drain. Upon doing so I believe that the period of collections should be extended from 4 years to 8 years as per IC 36-9-27-43. At this time the total annual collection is \$285.00, and the current balance is \$570.00. Currently, the maintenance collection of the drain is omitted when the fund reaches \$1,140.00. If the time period for collections is extended the balance in the fund could be \$2,280.00 depending on maintenance work performed on the drain.

This will provide additional funding in the future for clearing, debris removal or other work needed to ensure proper flow through bridges.

I recommend that this proposal be set for hearing on January 24, 2022.

Sincerely,



Kenton C. Ward, CFM
Hamilton County Surveyor

KCW/pll

Hinkle Creek Drain #367

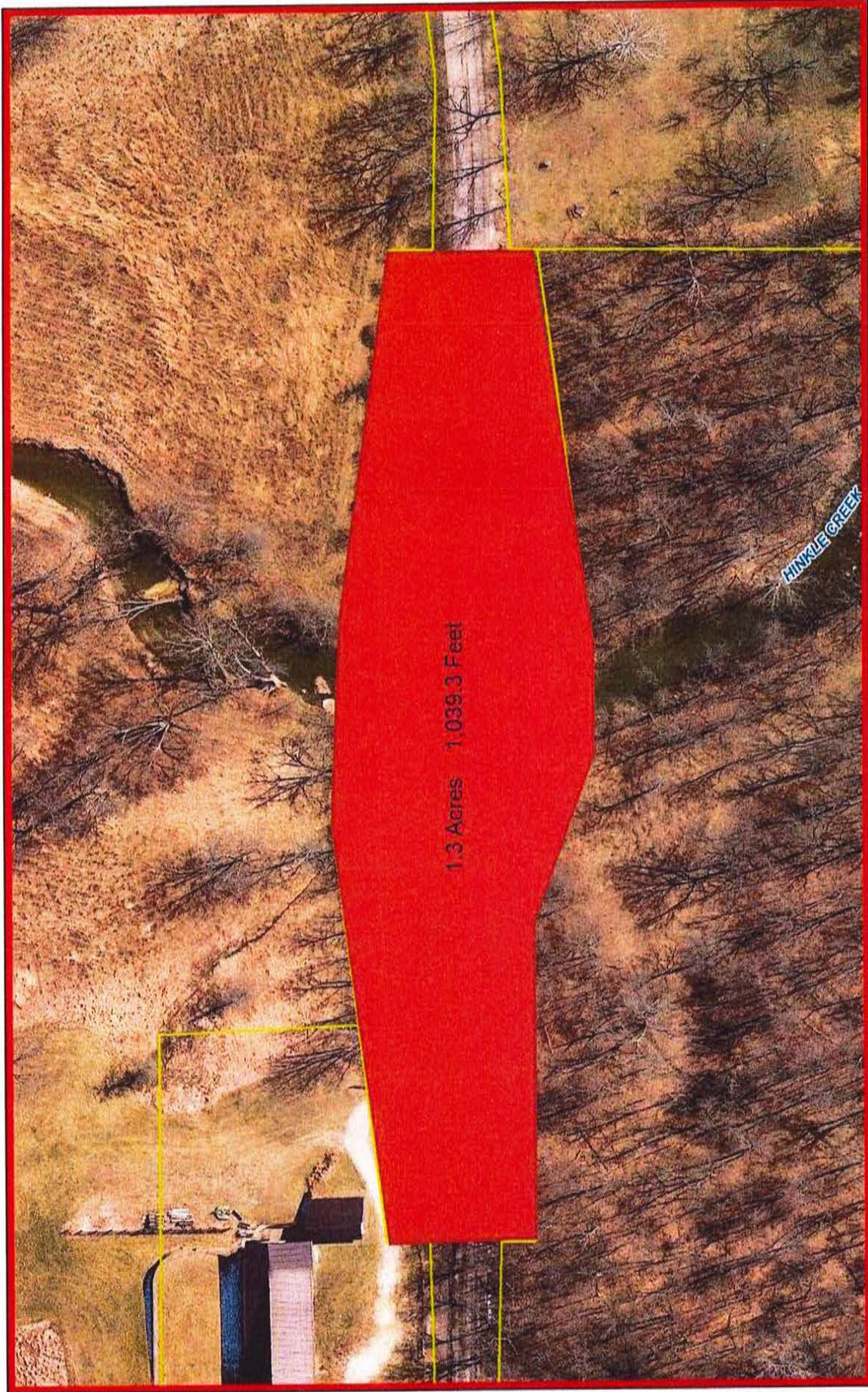
The collection period will be increased (from 4 to 8 times) to collect annual assessments until the balance of the drains fund equals eight (8) times its annual assessment.

*No change in current annual maintenance assessment.

Hearing: 01/24/22

Parcel	Owner	Description	Acres	Benefit	Asmt	Mnt	% of Total
		S9 T19 R4 225th St.	3.90				
		Between S32 T20 R4 & S5 T19 R4, 236th St at Bridge 48,	2.40				
		Between S9&16 T19 R4, 216th St at Bridge 102,	5.10				
99-99-99-99-999.001	Hamilton Co. Highway Dept.	Total:	11.40	11.40	*	100.0%	

Hinkle Creek Drain 225th Street Extension

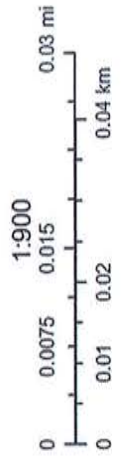


April 25, 2019

- Parcels
- Subdivisions
- Interstates & US Highways

- State Highways
- Major Roads
- Minor Roads

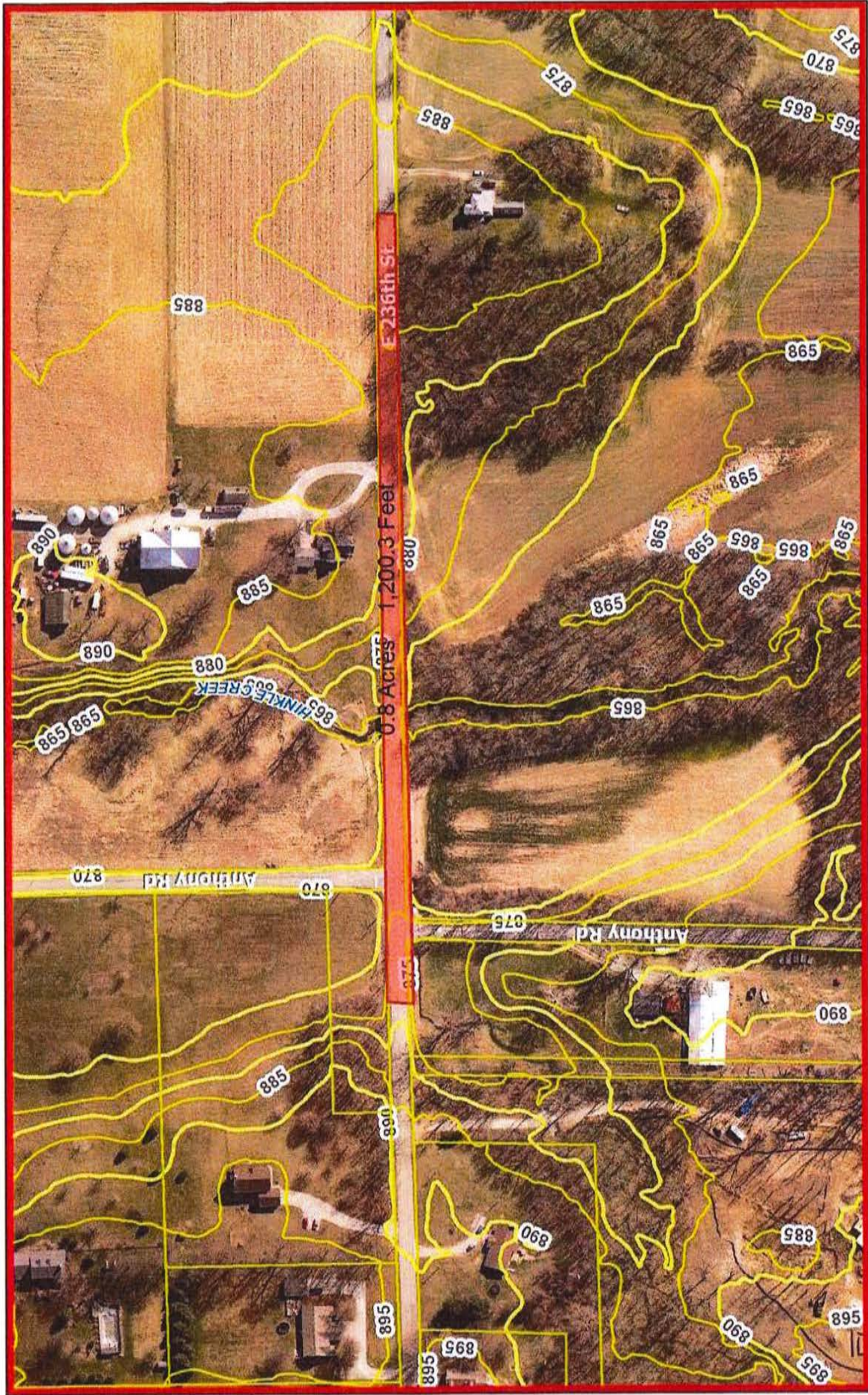
- Lakes & Reservoirs
- Rivers & Streams
- Corporate Limits (Outline)



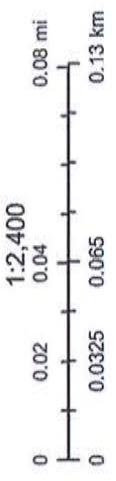
Hamilton County compiled this map. Although strict accuracy standards have been employed, Hamilton County does not warrant or guarantee the accuracy of the information contained herein and disclaims any and all liability resulting from any error or omission.

Author: Hamilton County

Hinkle Creek Drain, 236th Street Extension



August 6, 2019



- Parcels
- Subdivisions
- Interstates & US Highways
- State Highways
- Major Roads
- Minor Roads
- Lakes & Reservoirs
- Rivers & Streams
- Corporate Limits (Outline)

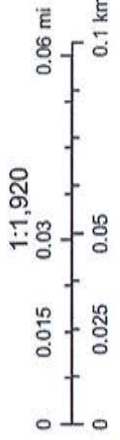
Hamilton County compiled this map. Although strict accuracy standards have been employed, Hamilton County does not warrant or guarantee the accuracy of the information contained herein and disclaims any and all liability resulting from any error or omission.
 Author: Hamilton County

Hinkle Creek Drain, 216th Street Extension



August 6, 2019

- Parcels
- Subdivisions
- Interstates & US Highways
- State Highways
- Major Roads
- Minor Roads
- Lakes & Reservoirs
- Rivers & Streams
- Corporate Limits (Outline)



Hamilton County compiled this map. Although strict accuracy standards have been employed, Hamilton County does not warrant or guarantee the accuracy of the information contained herein and disclaims any and all liability resulting from any error or omission.

Author: Hamilton County